

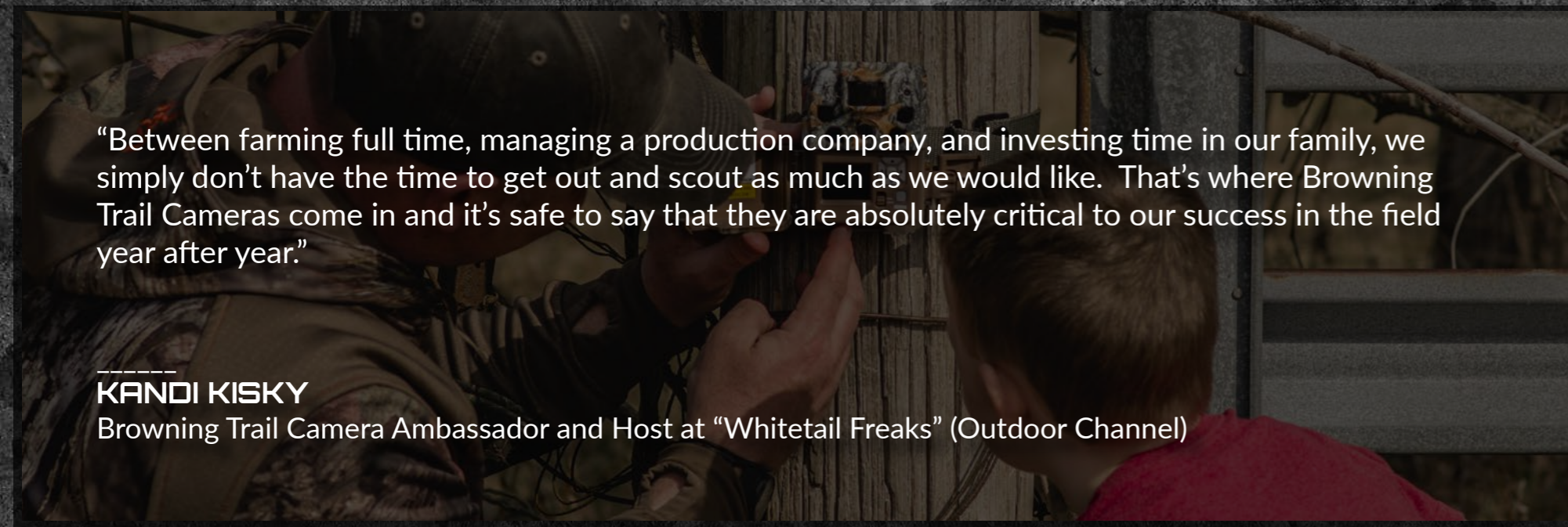
BROWNING®

TRAIL CAMERAS

BROWNINGTRAILCAMERAS.COM

2022

PRODUCT CATALOG



“Between farming full time, managing a production company, and investing time in our family, we simply don’t have the time to get out and scout as much as we would like. That’s where Browning Trail Cameras come in and it’s safe to say that they are absolutely critical to our success in the field year after year.”

KANDI KISKY

Browning Trail Camera Ambassador and Host at “Whitetail Freaks” (Outdoor Channel)

WELCOME



BROWNING®

TRAIL CAMERAS

Browning Trail Cameras are designed and manufactured by an avid group of hunters and outdoor enthusiasts who constantly strive to deliver high performance trail cameras to market through innovation and cutting edge technology. With unmatched quality and performance, once you have used a Browning Trail Camera, you will agree that the experience is second to none.

So please take a moment and let us know how we can meet your trail camera needs this year with our impressive selection of 2022 Browning Trail Cameras. Whether you are looking for our exciting NEW cellular cameras that work on nationwide 4G LTE networks, our ground breaking Radiant Night Illumination Technology, our cutting edge dual lens cameras, or our industry defining HD, Full HD, and UHD video technologies, we have the products you need for a successful 2022

To further underscore our commitment to customer satisfaction, all of our trail cameras and accessories are created using ingenuity, quality workmanship and the finest materials that are backed by a one year manufacturer’s warranty.

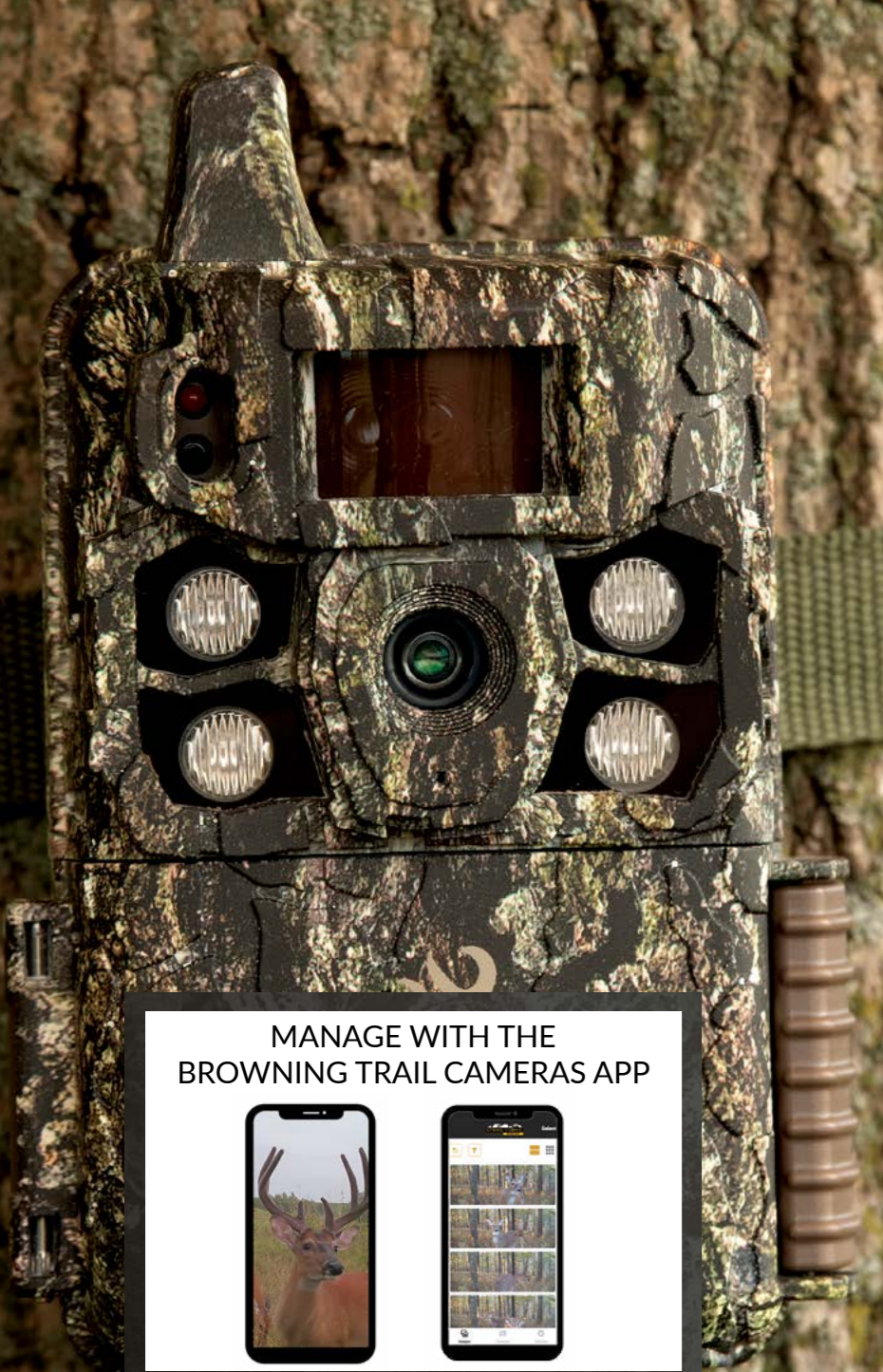
With all of those things in mind, it’s easy to see why people say: Browning Trail Cameras truly are “The Best There Is”.

-Your Friends at Browning Trail Cameras

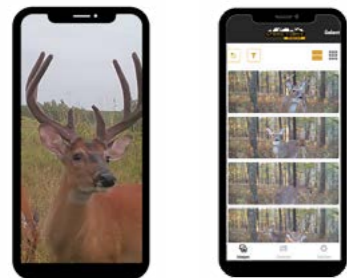
888.618.4496

www.browningtrailcameras.com

info@browningtrailcams.com



MANAGE WITH THE BROWNING TRAIL CAMERAS APP



DUAL CARRIER DEVICE
Camera can be configured for ATT or Verizon Networks



DEFENDER RIDGELINE PRO

Model# BTC-4G-RLOCP

The New Defender Ridgeline Pro Cellular Trail Camera has been updated for 2022 to be the ultimate remote game scouting tool, featuring the new **RADIANT 4 Infrared Illumination System** for enhancing clarity and range in night photos and videos. The Defender Ridgeline Pro camera is the perfect camera to operate on remote hunting properties with limited access, as well as sensitive areas where game do not need to be disturbed such as rublines, scrapes and other key hunting areas.

Transmit HD images and Video clips over a nationwide 4G LTE network from your favorite hunting spot right to your laptop or mobile device using the Strike Force Wireless Management System. Our dual carrier technology has both ATT and Verizon pre installed. Simply pick the cellular carrier that offers the best coverage on your property.

Camera Features

- 22 MP
- Built in chipset for Verizon or ATT activation
- Pre Installed ATT and Verizon SIM cards
- 100 ft. Invisible Infrared Illumination at Night
- Adjustable IR Flash (Power Save, Fast Motion, Long Range)
- 0.135 - 0.7 second Adjustable Trigger Speed
- GPS Theft Protect Security System
- 1920 x 1080 FHD Videos with Sound (5 sec.- 2 min. length)
- Adjustable Detection Range up to 80 ft.
- GPS tagged Images
- 0.5 Second Recovery Time between Images
- Illuma-Smart Technology Automatically adjusts IR Flash for Perfect Night Photos
- SD Card Management Options
- Smart IR Video
- Long Battery Life from 8 AA batteries (not included)
- Battery Meter Functions with Alkaline and Lithium Batteries
- Up to 8 Multi Shot Images
- Up to 8 Rapid Fire Images
- Programmable Picture Delay (1 sec. - 60 min.)
- Picture info bar displays: Time, Date, Temperature, Moon Phase, Camera ID
- 12 volt External Power Jack
- Supports up to 512GB SDXC Memory Card (not included)
- ¼" -20 Tripod Socket
- Metal Tree Mount Bracket



CELLULAR FUNCTIONS:

- Operates on a nationwide 4G LTE Network (Verizon or ATT)
- Dual Carrier technology allows the customer to decide between ATT or Verizon networks
- Uploads standard images
- Uploads HD images or Video clips
- Email / Text images or video clips
- Create and Manage footage in Folders
- Month-to-Month Data plans
- No Contracts
- Activate cameras only when needed
- Easy to use mobile app
- ATT and Verizon provider options
- Scheduled or immediate image uploads



4 HIGH POWER LEDs

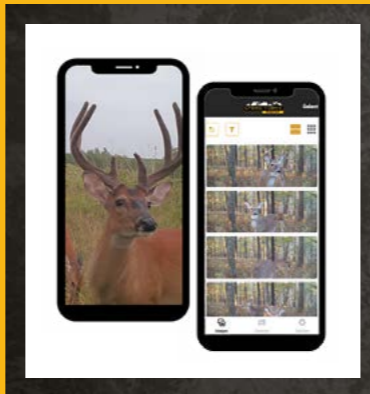
CATALOG 2022



GPS
THEFT PROTECT

4G
LTE

MANAGE WITH
BROWNING TRAIL
CAMERAS APP



DEFENDER VISION

The new Defender Vision series cellular trail camera features a compact case size and Invisible Infrared Night illumination, a perfect combination for an undetectable scouting tool for your hunting property. The **4G cellular technology and built in high gain internal antenna pair up to transmit more pictures from remote hunting spots to your mobile device or laptop.** Industry leading 0.135 second trigger speeds, 90 ft. night illumination range and superior battery life make this camera a real workhorse in the field. This camera can be activated on the ATT or Verizon network.

GPS
THEFT PROTECT

Model# BTC-4G-V



OPERATES ON THE
AT&T Wireless
4G LTE NETWORK

connected by
verizon

Camera Features

- 20 MP
- Built in chipset for Verizon or ATT activation
- Pre Installed ATT and Verizon SIM cards
- 90 ft. Infrared Illumination at Night
- Adjustable IR Flash (Power Save, Long Range)
- 0.135 - 0.7 second Adjustable Trigger Speed
- GPS Theft Protect Security System
- 1920 x 1080 FHD Videos with Sound (5 sec.- 2 min. length)
- Adjustable Detection Range up to 80 ft.
- GPS Tagged Images
- 0.5 Second Recovery Time between Images
- Illuma-Smart Technology Automatically adjusts IR Flash for Perfect Night Photos
- SD Card Management Options
- Smart IR Video
- Long Battery Life from 8 AA batteries (not included)
- Battery Meter Functions with Alkaline and Lithium Batteries
- Up to 8 Multi Shot Images
- Up to 8 Rapid Fire Images
- Programmable Picture Delay (1 sec. - 60 min.)
- Picture info bar displays: Time, Date, Temperature, Moon Phase, Camera ID,
- 12 volt External Power Jack
- Supports up to 512GB SDXC Memory Card (not included)
- ¼" -20 Tripod Socket
- Metal Tree Mount Bracket

CELLULAR FUNCTIONS:

- Operates on a nationwide 4G LTE Network (Verizon or ATT)
- Uploads standard images
- Uploads HD images
- GPS tagged images
- Mapping feature
- Email / Text images
- Create and Manage footage in Folders
- Month-to-Month Data plans
- No Contracts
- Activate cameras only when you need them
- Easy to use mobile app
- ATT and Verizon provider options
- Scheduled or immediate image uploads



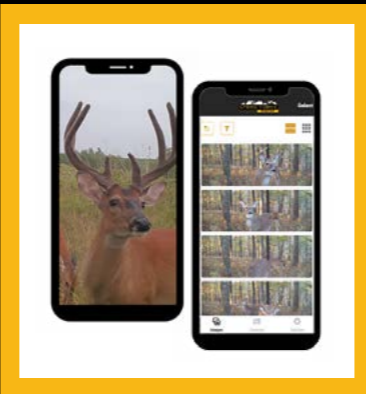
NEW RADIANT 6

NIGHT ILLUMINATION TECHNOLOGY

6 HIGH POWER LEDs



MANAGE WITH
BROWNING TRAIL
CAMERAS APP



DEFENDER PRO SCOUT MAX

Our new Defender Pro Scout Max cellular trail camera is the perfect cellular trail camera to scout your favorite hunting property 24/7. This camera was designed to run for up to 1 year in the field on a set of 8 AA batteries. The high resolution camera sensor paired with fast trigger speeds and cellular technology, the New Defender Pro Scout Max will soon be your “go to” solution to see what’s visiting your green fields and running your trail system. Other features include GPS tagged images, 100 Ft. detection range and the all new **RADIANT 6 Night Illumination Technology**.

Camera can be activated on either the ATT or Verizon network.



Camera Features

- 20MP
- Built in chipset for Verizon or ATT activation
- Pre Installed ATT and Verizon SIM cards
- 120 ft. Infrared Illumination at Night
- NEW “RADIANT 6” Night Illumination Technology
- Adjustable IR Flash (Power Save, Fast Motion, Long Range)
- 0.25 Second Trigger Speed
- GPS Tagged Images
- 1600 x 900 HD+ Videos with Sound (5 sec.- 2 min. length)
- 100 Ft. Image Detection Range
- 0.35 Second Recovery Time Between Images
- Illuma-Smart Technology Automatically adjusts IR Flash for Perfect Night Photos
- SD Card Management Options
- Smart IR Video
- Up to 1 Year Battery Life from 8 AA batteries (not included)
- Up to 8 Multi Shot Images
- Up to 8 Rapid Fire Images
- Programmable Picture Delay (1 sec. – 60 min.)
- Picture info bar displays: Time, Date, Temperature, Moon Phase, Camera ID
- 12 volt External Power Jack
- Supports up to 512GB SDXC Memory Card (not included)
- ¼” -20 Tripod Socket

Model# BTC-PSM



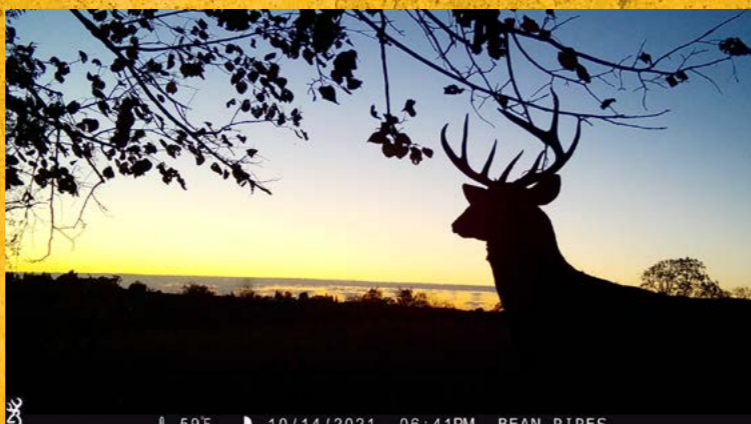
CELLULAR FUNCTIONS:

- Operates on a Nationwide 4G LTE Network
- Uploads Standard Images
- Uploads HD Images
- Email / Text Images
- Create Folders Online to Organize Images
- Month-to-Month Data plans
- No Contracts
- Activate Cameras Only when You Need Them
- Easy to Use Mobile App for Tablets and Smart Phones
- Scheduled or Immediate Image uploads
- Verizon and AT&T Options Available

NEW RADIANT 6

NIGHT ILLUMINATION TECHNOLOGY

6 HIGH POWER LEDs



“Racing season keeps me busy late into the fall and a lot of the places I hunt aren’t even close to my house. So when I do have a chance to finally get away for a couple of days, I need as much information as possible about the deer I’m hunting and I can always count on my Browning Trail Cameras to do the job while I’m away.”

GREG ZIPPADELLI

Browning Trail Cameras Ambassador and Host at “Drop Zone” (Outdoor Channel)

COMMAND OPS ELITE 20

The Command Ops Elite series of cameras has been updated to deliver big performance in a small package. The crisp **20MP picture resolution** ensures the very best quality pictures of your game, day or night. With fast 0.3 second trigger speeds, you are sure to capture anything that steps out in front of your camera. The Command Ops Elite series also features 900p HD+ video with sound, to capture the best video of game on your property.



Model# BTC-4E20



Camera Features

- 20 MP
- 80 ft. Infrared Flash Range
- 0.3 Second Trigger Speed
- Infrared LED Illumination at night
- 900p HD+ Videos with Sound (5 sec. - 2 min. length)
- 70 ft. Detection Range
- Illuma-Smart Technology Automatically adjusts IR Flash for Perfect Night Photos
- SD Card Management Feature
- Long Battery Life from 6 AA Batteries (not included)
- Up to 8 Multi Shot Images
- Up to 4 Rapid Fire Images
- Programmable Picture Delay (1 sec. - 60 min.)
- Picture info bar displays: Time, Date, Temperature, Moon Phase, Camera ID
- 12 volt External Power Jack
- Supports up to 32GB SD Card (not included)
- ¼" -20 Tripod Socket
- Compact Case Size 4.5" x 3.5" x 2.5"
- Timelapse Plus Camera Mode
- Compatible with Browning Buck Watch Timelapse Viewer Software

"Because I'm on a tractor most of the fall, I don't have a lot of time to get out and scout a lot of places. So it's almost a necessity that my trail cameras are not only dependable, but capture the best quality images and videos possible. That's why we choose Browning Trail Cameras."

DON KISKY
Browning Trail Camera Ambassador and Host at "Whitetail Freaks" (Outdoor Channel)



NEW
RADIANT 4
NIGHT ILLUMINATION TECHNOLOGY

4 HIGH POWER LEDs

STRIKE FORCE FULL HD

The new Strike Force FHD cameras feature a multitude of upgrades for 2022. The new "Radiant" LED Illumination System enhances night time picture and video illumination like never before. The new Radiant 4 illumination technology greatly enhances the night IR flash modes by delivering greater efficiency in Economy mode, longer flash ranges in High Power Mode and faster shutter speeds in Fast Motion modes, resulting in clearer images when game animals are in motion. The new adjustable trigger speed feature allows you to select the trigger speed that is right for your camera's location, from 0.135 to 0.7 seconds. Experience high end performance with 22 MP picture quality, and a video processor that produces incredible quality 1080p Full HD video clips with sound. The Strike Force FHD camera also features SD Card Management options, and Smart IR video, which continues to record video during the day when game is present.

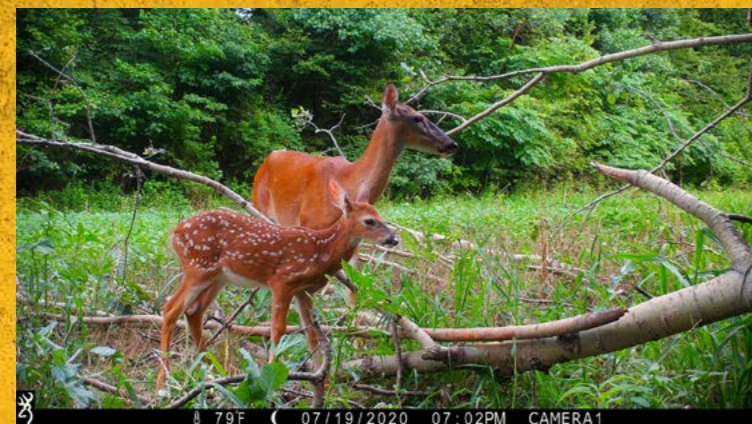


Model# BTC-5FHD



Camera Features

- 22 MP
- 110 ft. Flash Range
- 0.135 - 0.7 Second Adjustable Trigger Speed
- 4 High Power Infrared LEDs for Night Illumination
- 1080p Full HD Videos with Sound (5 sec. - 2 min. length)
- 80 ft. Detection Range (user adjustable)
- 0.5 Second Recovery Time
- New "RADIANT 4" Night IR Illumination
- Adjustable Infrared Flash options (Long Range, Fast Motion, Economy modes)
- Illuma-Smart Technology Automatically adjusts IR Flash for Perfect Night Photos
- SD Card Management
- Long battery life from 6 AA batteries (not included)
- Up to 8 Multi Shot Images
- Up to 8 Rapid Fire Images
- Smart IR Video
- Selectable Start/Stop Image Timer
- Programmable Picture Delay (1 sec. - 60 min.)
- Picture info bar displays: Time, Date, Temperature, Moon Phase, Camera ID
- 12 volt External Power Jack
- Supports up to 512GB SDXC Memory Card (not included)
- 1/4" -20 Tripod Socket
- Battery Meter Functions with Alkaline, Rechargeable or Lithium Batteries
- Compact case size 4.25" x 3." x 2.5"
- Timelapse Plus camera mode with IR triggered images



“Without a doubt, Browning Trail Cameras are the single most reliable game cameras on the market today. I bought my first one in 2013 and it’s still going strong today!”

DEREK DIRNBERGER

Browning Trail Cameras Brand Ambassador and Chief Hunter at “The Break” (Pursuit Channel)

STRIKE FORCE HD MAX PLUS



The Strike Force HD MAX Plus cameras feature an adjustable 0.135-0.7 second trigger speed and 0.5 second recovery time between pictures. The new adjustable trigger speed feature allows you to select the trigger speed that is right for your camera’s location. Experience high end performance with 20 MP picture quality, and a video processor that produces incredible quality 1600 x 900p HD+ video clips with sound. The Strike Force HD MAX Plus camera also features an adjustable Infrared Flash at night. You can select between Long Range, Fast Motion or Economy mode to take great pictures of game at ranges out to 100 ft. at night. Other features include SD Card Management options, and Smart IR video, which continues to record video during the day when game is present. The Strike Force HD MAX Plus is also compatible with up to 512 GB SDXC memory cards.

Model# BTC-5HD-MXP



Camera Features

- 20 MP
- 100 ft. IR Flash Range
- 0.135 Second Trigger Speed
- Adjustable Infrared LED Illumination at Night (Powersave, Long Range, Fast Motion)
- 1600 x 900 HD+ Videos with Sound (5 sec. - 2 min. length)
- 80ft. Detection Range (user adjustable)
- 0.5 Second Recovery Time
- Selectable Night IR Illumination (Long Range, Fast Motion, Economy modes)
- Illuma-Smart Technology Automatically adjusts IR Flash for Perfect Night Photos
- SD Card Management
- Long battery life from 6 AA batteries (not included)
- Up to 8 Multi Shot Images
- Up to 8 Rapid Fire Images
- Smart IR Video
- Programmable Picture Delay (1 sec. – 60 min.)
- Picture info bar displays: Time, Date, Temperature, Moon Phase, Camera ID
- 12 volt External Power Jack
- Supports up to 512GB SDXC Memory Card (not included)
- ¼" -20 Tripod Socket
- Battery Meter Functions with Alkaline, Rechargeable or Lithium Batteries
- Compact case size 4.5" x 3." x 2.5"
- Timelapse Plus camera mode with IR triggered images
- Compatible with Browning Buck Watch Timelapse Viewer Software

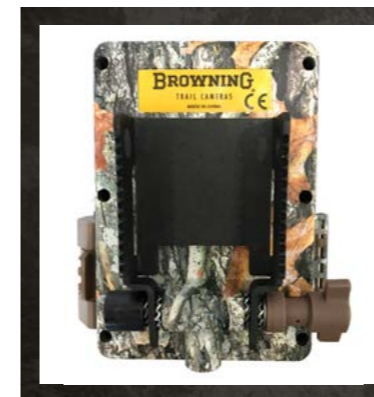
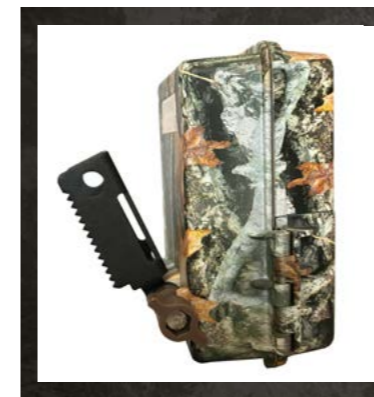


"I enjoy hosting deer camp and acting as a guide for all of my friends and family back home and I could not do it without my Browning Trail Cameras. They take great pictures and videos and when it comes down to it, they help make deer camp a success every year!"

BRAD MILLER

Browning Trail Cameras Brand Ambassador and Host at "Country Boys Outdoors" (Sportsman Channel)

STRIKE FORCE HD PRO X



The Strike Force HD Pro X offers an upgraded feature set including a **1.5" color view screen** and an all-steel adjustable mounting bracket for easy installation in the field. Powerful IR illumination allows you to customize your night images with 3 modes of operation; Power Save, Long Range and Fast Motion settings to get the perfect night picture. Other features include SD Card Management features, 900p video clips with sound and timelapse capability. The Strike Force HD Pro X is also compatible with up to 512 GB SDXC memory cards.

Model# BTC-5HDPX



Camera Features

- 20 MP
- 1.5" Color View Screen
- 120 ft. Flash Range
- Adjustable Infrared LED Illumination (Power Save, Long Range, Fast Motion)
- 0.22 Second Trigger Speed
- 1600 x 900 HD+ Videos with Sound (5 sec. - 2 min. length)
- 80 ft. Motion Detection Range
- 0.4 Second Picture Recovery Time
- Illuma-Smart Technology Automatically adjusts IR Flash for Perfect Night Photos
- SD Card Management
- Long Battery Life from 6 AA Batteries (not included)
- Up to 8 Multi Shot Images
- Up to 8 Rapid Fire Images
- Smart IR Video
- Selectable Start / Stop Image Timer
- Programmable Picture Delay (1 sec. - 60 min.)
- Picture info bar displays: Time, Date, Temperature, Moon Phase, Camera ID
- Multilingual Programming Menu
- 12 volt External Power Jack
- Support up to 512GB SDXC Memory Card (not included)
- ¼" -20 Tripod Socket
- Compact Case Size 4.25" x 3" x 2.5"
- Adjustable Steel Tree Mount Bracket
- Timelapse Plus Camera Mode with IR Triggered Images
- Compatible with Browning Buck Watch Timelapse Viewer Software



NEW
RADIANT 6
 NIGHT ILLUMINATION TECHNOLOGY

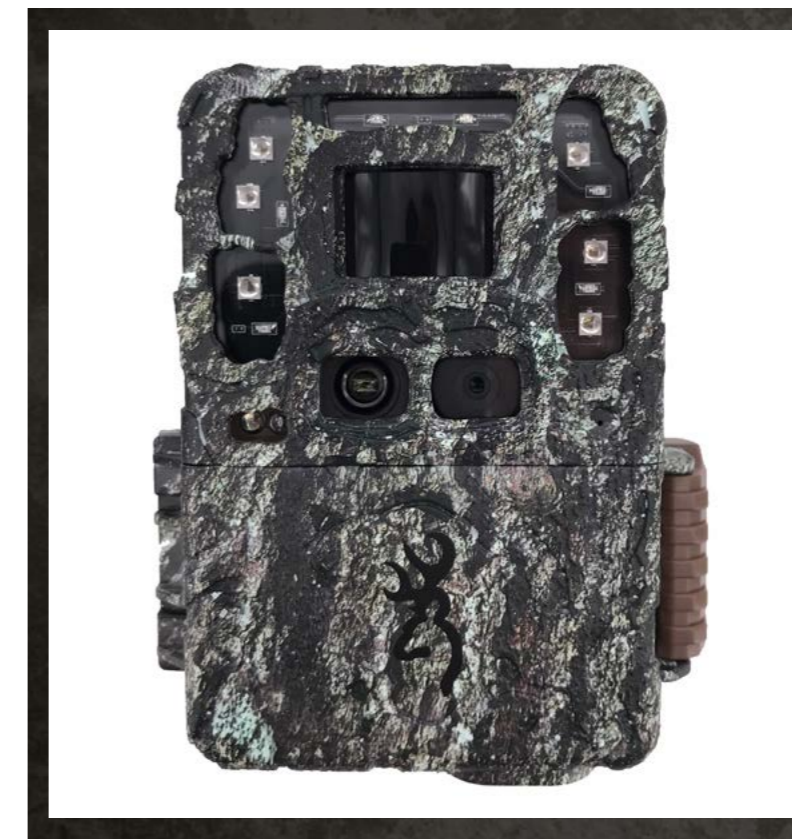
6 HIGH POWER LEDs

“Running a successful outfitting business takes a lot of time and a lot of effort and requires you to be in more than one place at a time. That’s why trail cameras can be critical to the success of your outfit each season and I’m happy to say that Browning Trail Cameras get me the information I need, when I need it, and are an important part of our success.”

TOM MCMILLAN,

Browning Trail Cameras Brand Ambassador and Host at “McMillan” (Outdoor Channel)

STRIKE FORCE PRO DCL



The most feature rich camera in the Strike Force line up is the Strike Force Pro DCL. Our flagship Strike Force model features “**Dual Camera Lens Technology**”. We have developed a custom tuned daytime camera lens to produce razor sharp daytime images, while the dedicated night camera lens takes incredibly clear nighttime images. The **new RADIANT 6 Infrared Illumination System** has been integrated to enhance the clarity and range of the night images. The Strike Force Pro DCL also features a lightning fast 0.15 second trigger speed and a 100 ft. motion detection range. Other features include an all-steel adjustable tree mount bracket, Timelapse capability and captures 1080p Full HD video with sound. The Strike Force Pro DCL is also compatible with up to 512 GB SDXC memory cards.

Model# BTC-50CL



Camera Features

- 26 MP
- Dual Camera Lens Technology
- 1.5" Color View Screen
- 130 ft. Flash Range
- NEW “RADIANT 6” Night Illumination Technology
- Adjustable IR Flash Range (Power Save, Long Range, Fast Motion)
- 0.15 Second Trigger Speed
- 1920 x 1080 Full HD Videos with Sound (5 sec. - 2 min. length)
- Wide view 54 degree Viewing Angle
- 100 ft. Detection Range
- 0.35 Second Picture Recovery Time
- Illuma-Smart Technology Automatically adjusts IR Flash for Perfect Night Photos
- SD Card Management
- Long battery life from 6 AA Batteries (not included)
- Up to 8 Multi Shot Images
- Up to 8 Rapid Fire Images
- Smart IR Video
- Programmable Picture Delay (1 sec. - 60 min.)
- Picture info bar displays: Time, Date, Temperature, Moon Phase, Camera ID
- 12 volt External Power Jack
- All-Steel Adjustable Tree Mounting Bracket
- Supports up to 512GB SDXC Memory Card (not included)
- ¼" -20 Tripod Socket
- Compact Case Size 4.25" x 3.25" x 2.5"

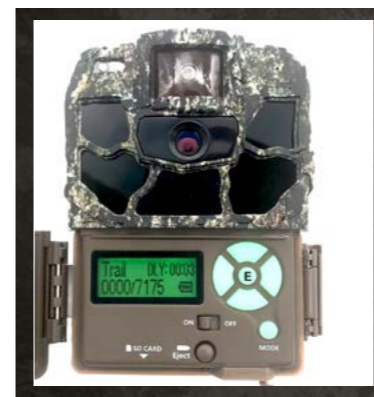


“Not only am I an avid hunter who uses trail cameras for scouting during hunting season, I also enjoy getting unique trail camera images of different species year-round, so I need a trail camera that will last! From ease of setup and great image quality to long battery life and durability, Browning Trail Cameras are by far the best trail cameras that I have ever used!”

ANDREA ROTHOVE

Browning Trail Cameras Ambassador and Huntress View Founder and Owner

DARK OPS FHD



The 2022 Dark Ops Full HD cameras from Browning feature an upgraded image processor that produces amazing 1080p Full HD videos of game on your property. The new Dark Ops Full HD also features the all new Radiant 4 Night IR Illumination, in a wavelength that is invisible, and can not be detected by animals or humans. The invisible illumination makes this a perfect camera for camera shy bucks, or for use in a security application on your property. Other features include lightning fast 0.135 - 0.7 second adjustable trigger speeds and adjustable IR Illumination with Long Range and Economy modes, to custom tailor your camera for open fields or wooded areas. The Dark Ops Full HD also features a battery meter that is compatible with Alkaline, Rechargeable and Lithium batteries.

Model# BTC-6FHD



Camera Features

- 22 MP
- 90 ft. Flash Range
- 0.135 - 0.7 Second Adjustable Trigger Speed
- 4 High Power Infrared LEDs for Night Illumination
- 1080p Full HD Videos with Sound (5 sec. - 2 min. length)
- Invisible Infrared LED Illumination at Night
- 80 ft. Detection Range (user adjustable)
- 0.5 Second Recovery Time
- New "RADIANT 4" Night IR Illumination
- Selectable Night IR Illumination (Fast Motion, Long Range, Economy modes)
- Illuma-Smart Technology Automatically adjusts IR Flash for Perfect Night Photos
- SD Card Management
- Long battery life from 6 AA batteries (not included)
- Up to 8 Multi Shot Images
- Up to 8 Rapid Fire Images
- Smart IR Video
- Selectable Start / Stop Image Timer
- Programmable Picture Delay (1 sec. - 60 min.)
- Picture info bar displays: Time, Date, Temperature, Moon Phase, Camera ID, Barometric Pressure
- 12 volt External Power Jack
- Supports up to 512GB SDXC Memory Card (not included)
- ¼" -20 Tripod Socket
- Battery Meter Functions with Alkaline, Rechargeable or Lithium Batteries
- Compact case size 4.25" x 3." x 2.5
- Timelapse Plus camera mode with IR triggered images



“I’m fortunate to get to hunt away from home a few times a year in a few different places, but it’s almost impossible to be able to go scout all of those places before I get there. So that’s why I need great cameras to get the scouting done when I’m not around, and that’s why **I choose Browning Trail Cameras!**”

CARL DRAKE
 Browning Trail Cameras Brand Ambassador and Team Hunter at “The Break” (Pursuit Channel)

DARK OPS HD MAX PLUS



The 2022 Dark Ops HD MAX Plus cameras from Browning feature improved trigger speeds to capture fast moving game on your hunting property. These cameras feature an invisible infrared flash, which is perfect for capturing photos and videos with zero detection from those camera shy bucks. The new Dark Ops HD Max Plus packs all the performance you would expect with 20 MP picture quality, 1600x900p HD+ videos with sound, lightning fast 0.135 - 0.7 second adjustable trigger speeds, and the ability to take over 15,000 pictures on a set of batteries. Another feature offered is adjustable IR Illumination with Long Range and Economy modes, to custom tailor your camera for open fields or wooded areas. The Dark Ops HD MAX Plus also features a battery meter that is compatible with Alkaline, Rechargeable and Lithium batteries.

Model# BTC-6HD-MXP



Camera Features

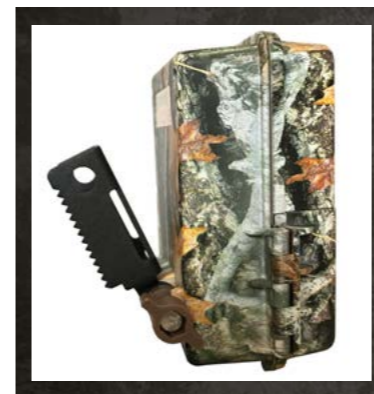
- 20 MP
- 80 ft. Flash Range
- 0.135 – 0.7 Second Adjustable Trigger Speed
- Invisible Infrared LED Illumination at Night
- 1600 x 900 HD+ Videos with Sound (5 sec.- 2 min. length)
- 0.5 Second Recovery Time
- Selectable Night IR Illumination (Long Range, Economy modes)
- Illuma-Smart Technology Automatically adjusts IR Flash for Perfect Night Photos
- SD Card Management Options
- Long Battery life from 6 AA Batteries (not included)
- Up to 8 Multi Shot Images
- Up to 8 Rapid Fire Images
- Smart IR Video
- Programmable Picture Delay (1 sec. – 60 min.)
- Picture info bar displays: Time, Date, Temperature, Moon Phase, Barometric Pressure, Camera ID
- 12 volt External Power Jack
- Supports up to 512GB SDXC Memory Card (not included)
- Compact Case Size 4.5" x 3.25" x 2.5"
- ¼" -20 Tripod Socket
- Battery Meter Functions with Alkaline, Rechargeable or Lithium Batteries
- Timelapse Camera Mode plus IR Triggered Images
- Compatible with Browning Buck Watch Timelapse Viewer Software



“One of the most important things to me when it comes to Browning Trail Cameras is that they have GREAT BATTERY LIFE! I like to leave key areas undisturbed for long periods of time and I can do that because of the battery life that I get with my Browning Trail Cameras!”

LEVI MORGAN
Browning Trail Cameras Brand Ambassador and Host at “Bow Life” (Outdoor Channel)

DARK OPS HD PRO X



The Dark Ops HD Pro X takes footage of wildlife on your property using a **Powerful Invisible Infrared Flash** that is completely undetectable. This camera is perfect for animals that are easily spooked, or trespassers on your property. Features for this camera include: **1.5" color screen**, all-steel adjustable tree mount bracket, 0.15 second trigger speeds and adjustable IR flash power at night. The Dark Ops HD Pro X also shoots 900p HD+ video with sound and is compatible with SD cards up to 512GB.

Model# BTC-6HDPX



Camera Features

- 20MP
- 1.5" color view screen
- Invisible "Night Vision" Infrared LED illumination at night
- 80 ft. Flash Range
- 0.15 Second Trigger Speed
- Smart IR video
- 1600 x 900 HD+ videos with sound (5 sec.- 2 min. length)
- 80 ft. Detection Range
- 0.35 Second Picture Recovery Time
- Illuma-Smart Technology Automatically adjusts IR Flash for Perfect Night Photos
- SD Card Management Options
- Long Battery Life from 6 AA batteries (not included)
- Up to 8 Multi Shot Images
- Up to 8 Rapid Fire Images
- Smart IR video
- Selectable Start / Stop Image timer
- Programmable picture delay (1 sec. - 60 min.)
- Picture info bar displays: time, date, temperature, moon phase, barometric pressure, camera ID
- Multilingual Programming Menu
- 12 volt external power jack
- All- Steel adjustable tree mount bracket
- Support up to 512GB SDXC memory card (not included)
- ¼" -20 tripod socket
- Compact case size 4.25" x 3" x 2.5"
- Timelapse camera mode plus IR triggered images

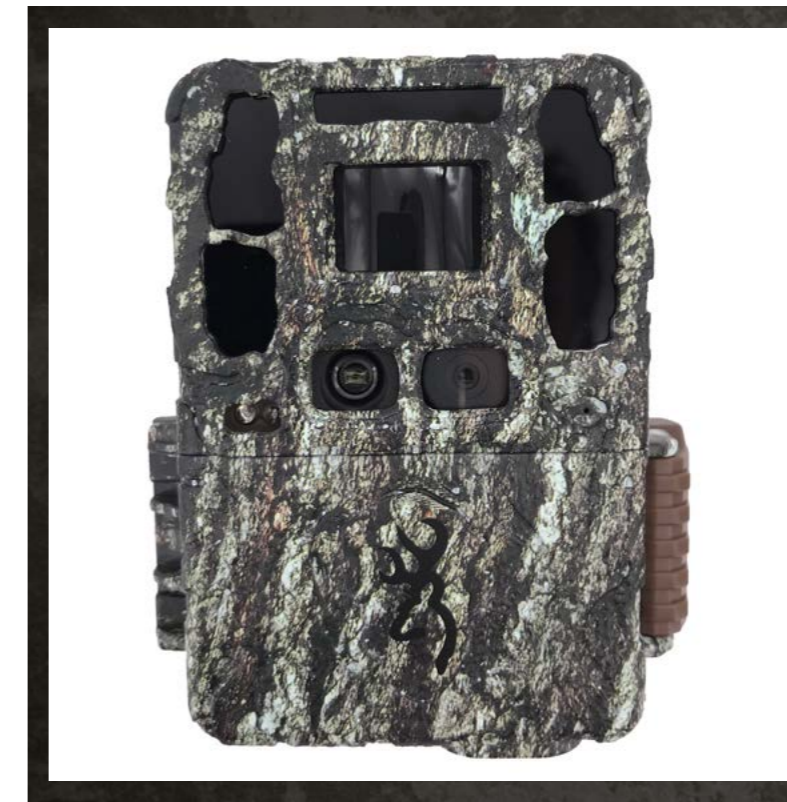
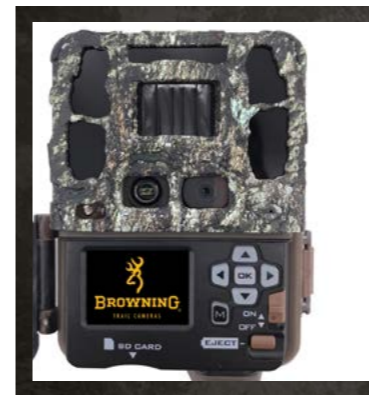


“There are so many good reasons to choose Browning Trail Cameras, but one of the things that stands out to me is how easy they are to set-up. The menus are pretty simple to navigate and allow me to get my cameras set-up and in the field as fast as possible. Browning Trail Cameras are the Best There Is.”

JEREMY MILLS

Browning Trail Cameras Brand Ambassador and Team Hunter at “The Break” (Pursuit Channel)

DARK OPS PRO DCL



The Dark Ops Pro DCL has the most robust feature set in our Dark Ops camera series. These cameras feature an Infrared Illumination System to increase picture quality and range at night like never before. The Invisible IR Illumination ensures game or trespassers on your property do not detect the camera while it is capturing images or videos. The Dark Ops Pro DCL features **“Dual Camera Lens Technology”**. This feature incorporates a custom tuned daytime camera lens to produce razor sharp daytime images, while the dedicated night camera lens takes incredibly clear nighttime photos. This camera packs all the performance you would expect with 26MP picture quality, 1080p Full HD video with sound, lightning fast 0.15 second trigger speeds, and superior battery life. Additional features include SD card management options and Smart IR video to keep recording game during the daytime. The Dark Ops Pro DCL is compatible with up to 512GB SD cards.

Model# BTC-6DCL



Camera Features

- 26MP
- Dual Camera Lens Technology
- 1.5" color view screen
- Invisible Night IR Illumination
- 100 ft. flash range
- Wide View 54 degree Viewing Angle
- Adjustable flash range (fast motion, power save, long range)
- 1920x1080 Full HD videos with sound (5 sec.- 2 min. length)
- 0.15 second trigger speed
- 0.35 second picture recovery time
- Illuma-Smart Technology Automatically adjusts IR Flash for Perfect Night Photos
- All-Steel adjustable tree mounting bracket
- SD Card Management
- Long battery life from 6 AA batteries (not included)
- Up to 8 multi Shot images
- Up to 8 Rapid Fire images
- Smart IR video
- Programmable picture delay (1 sec. – 60 min.)
- Picture info bar displays: time, date, temperature, moon phase, barometric pressure, camera ID
- 12 volt external power jack
- Support up to 512GB SDXC memory card (not included)
- ¼" -20 tripod socket
- Compact case size 4.25" x 3.5" x 2.5"
- Timelapse Plus camera mode with IR triggered images
- Compatible with Buck Watch Timelapse viewer software



“Anybody that knows us, knows that family is a priority. So during our annual road trip each fall, when we do have a break, I like to head home to spend time with the kids. Obviously, that time is well spent, but it does cut back on the time I am able to scout. So I depend on our Browning Trail Cameras to do the work while I am away, so that I can get in the right spot as soon as I get back to deer camp.”

GINA BRUNSON

Browning Trail Camera Ambassador and Host at “Addicted to the Outdoors” (Outdoor Channel)

RECON FORCE 4K EDGE



The Recon Force 4K EDGE camera features **true 4K UHD video recording @ 30 fps.**, as well as the ability to capture images up to 32MP. This camera also includes adjustable detection ranges from 55ft.- 80 ft., along with 2 adjustable IR flash modes for optimum picture control at night. To help you view images and videos in the field, the Recon Force 4K has a built in **2 inch color display**. Additional features include Smart IR video, which continues to record video footage while game is moving in front of the camera and SD Card Management options which allow you to overwrite older images on the SD card if the memory is full. The Recon Force 4K EDGE is also compatible with up to 512 GB SDXC memory cards.

Model# BTC-7-4K-EDGE



Camera Features

- 32 MP
- 2" color viewing screen
- Video Options: 4K UHD @ 30fps, 1080p@60fps, 1080p@30fps with Sound
- Adjustable Trigger Speed (0.4 - 0.7 seconds)
- 0.6 Second Recovery Time Between Images
- Infrared LED Illumination at Night
- 100 ft. Flash Range
- Adjustable Detection Range up to 80 ft.
- Adjustable IR Flash (Power Save, Long Range)
- Illuma-Smart Technology Automatically adjusts IR Flash for Perfect Night Photos
- SD Card Management Options
- Long battery Life from 8 AA Batteries (not included)
- Up to 8 Multi Shot Images
- Up to 8 Rapid Fire Images
- Smart IR Video
- Selectable Start / Stop Image Timer
- Programmable Picture Delay (1 sec. - 60 min.)
- Picture info bar displays: Time, Date, Temperature, Moon Phase, Camera ID
- Multilingual Programming Menu
- 12 volt External Power Jack
- Supports up to 512GB SDXC Memory Card (not included)
- Battery Meter Functions with Alkaline and Lithium Batteries
- 1/4" -20 Tripod Socket
- Compact Case Size 5" x 4" x 2.5"
- Timelapse Plus Camera Mode, with Infrared Triggered Pictures
- Built in Metal Tree Bracket



NEW
RADIANT 5
 NIGHT ILLUMINATION TECHNOLOGY

5 HIGH POWER LEDS

"Browning Trail Cameras are honestly the best trail cameras we have ever used and without question they have become our number one scouting tool to get in the right place at the right time!"

JON BRUNSON

Browning Trail Camera Ambassador and Host at "Addicted to the Outdoors" (Outdoor Channel)

RECON FORCE ELITE HP5



The Recon Force Elite HP5 camera features new "Radiant 5" night illumination technology to give you the highest quality HDR night pictures available in any conditions. Also included is the adjustable detection range from 55ft. - 100 ft. and 3 adjustable IR flash modes for optimum picture control at night. Another great feature is the built in 2" color display to preview images and videos right in the field. The Recon Force Elite HP5 also features the highest quality 24 MP pictures and 1920 x 1080 Full HD video quality in either 30 or 60 frames per second for the most incredible video clips of game on your property. Additional features include Smart IR Video, which continues to record video footage while game is moving in front of the camera and SD Card Management Options which allow you to overwrite older images on the SD Card if the memory is full. The Recon Force EDGE HP5 is also compatible with up to 512 GB SDXC memory cards.

Model# BTC-7E-HP5

Camera Features

- 24 MP
- 2" Color Viewing Screen
- 130 ft. Infrared Flash Range at Night
- Adjustable IR Flash (Power Save, Long Range, Fast Motion)
- 0.1 - 0.7 second Adjustable Trigger Speed
- 1920 x 1080p FHD Videos with Sound (5 sec.- 2 min. length)
- Videos can be taken at 30 or 60 frames per second
- Adjustable IR Detection Range up to 100 ft.
- 0.5 Second Recovery Time between Images
- Illuma-Smart Technology Automatically adjusts IR Flash for Perfect Night Photos
- SD Card Management Options
- Smart IR Video
- Selectable Start / Stop Image Timer
- Long Battery Life from 8 AA batteries (not included)
- Battery Meter Functions with Alkaline, Rechargeable and Lithium Batteries
- Up to 8 Multi Shot Images
- Up to 8 Rapid Fire Images
- Programmable Picture Delay (1 sec. - 60 min.)
- Picture info bar displays: Time, Date, Temperature, Moon Phase, Camera ID
- Multilingual Programming Menu
- 12 volt External Power Jack
- Supports up to 512GB SDXC Memory Card (not included)
- ¼" -20 Tripod Socket
- Compact Case Size 5" x 3.5" x 2"
- Metal Tree Mount Bracket
- Timelapse Plus Camera Mode, with Infrared Triggered Pictures
- Compatible with Buck Watch Timelapse viewer software

“When I set up my trail cameras, I am a video guy! You learn so much about the animals by the way they are behaving and my Browning Trail Cameras deliver the best video and audio quality in the market. THAT’s why I choose Browning Trail Cameras!”

HAL SHAFFER

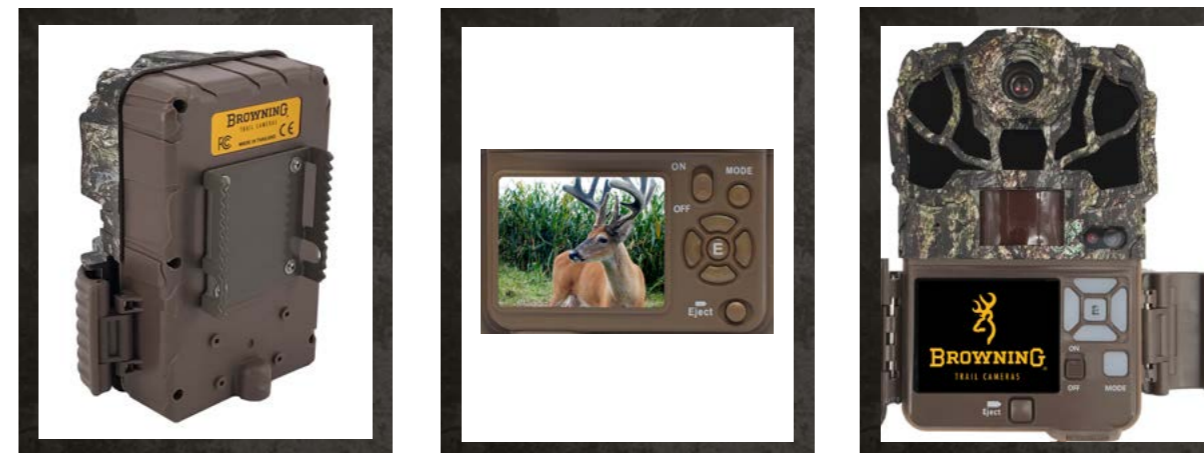
Browning Trail Cameras Brand Ambassador and Host at “Drop Zone” (Outdoor Channel)



NEW
RADIANT 5
 NIGHT ILLUMINATION TECHNOLOGY
5 HIGH POWER LEDs

SPEC OPS ELITE HP5

The New Spec Ops Elite HP5 features the highest quality 24 MP image resolution on the market today. The invisible, adjustable power “Night Vision” IR illumination reaches out to 100 ft., thanks to the new RADIANT 5 Night Illumination Technology. The new Spec Ops Elite HP5 camera also features an incredible 1920 x 1080 Full HD video processor, capable of producing stunning video footage of your game that can be easily viewed on a computer or big screen TV. Additional features include a 2” color view screen and Smart IR Video, which continues to record video footage while game is moving in front of the camera. SD Card Management options allow you to overwrite older images on the SD card if the memory is full. This camera is perfect for surveillance of game animals that are easily spooked, as well as a great security camera around your home or hunting property.



Model# BTC-8E-HP5

Camera Features

- 24 MP
- 2” Color Viewing Screen
- Invisible “Night Vision” Infrared LED Illumination at Night
- Adjustable IR Flash (Power Save, Fast Motion, Long Range)
- 100 Ft. IR Flash Range
- New “RADIANT 5” Night Illumination Technology
- HDR Night Images (High Dynamic Range)
- 1920 x 1080 FHD Videos with Sound (5 sec. - 2 min. length)
- Adjustable 0.1 - 0.7 Second Trigger Speed
- 0.5 Second Recovery Time
- Adjustable Detection Range up to 80ft.
- Illuma-Smart Technology Automatically adjusts IR Flash for Perfect Night Photos
- SD Card Management Options
- Smart IR Video
- H.264 Video Format
- Selectable Start / Stop Image Timer
- Long Battery Life from 8 AA Batteries (not included)
- Battery Meter Compatible with Alkaline, Rechargeable and Lithium Batteries
- Up to 8 Multi Shot Images
- Up to 8 Rapid Fire Images
- Programmable Picture Delay (1 sec. – 60 min.)
- Picture info bar displays: Time, Date, Temperature, Moon Phase, Barometric Pressure, Camera ID
- Multilingual Programming Menu
- 12 volt External Power Jack
- Support up to 512GB SDXC Memory Card (not included)
- ¼” -20 Tripod Socket
- Compact Case Size 5” x 3.5” x 2”
- Metal Tree Mount Bracket
- Timelapse Plus Camera Mode, with Infrared Triggered Pictures

The Patriot is the newest addition to our dual lens family of trail cameras, featuring military grade invisible infrared illumination technologies. The **Patriot**

trail camera has 2 built in camera sensors and lens arrays.

The sensor and lens combination for daytime photography is finely tuned to deliver clear, razor sharp images and videos in the field during the daytime. The military grade night vision sensor and lens system deliver nighttime photos and videos using invisible Infrared illumination. The Patriot also features a **2 inch color view screen**, adjustable night illumination options and shoots **1080p Full HD** videos at up to 60 frames per second. If you are looking for our most feature rich trail camera that operates completely undetectable in the woods, day or night, look no further than the Browning Patriot series camera.

- 24MP
- Dual Camera Lens Technology
- 2" Color View Screen
- Invisible Night IR Illumination
- 110 ft. Illumination Range at Night
- 90 ft. IR Detection Range
- Adjustable Flash Range (power save, long range)
- 1920x1080 Full HD Videos with Sound @ 60 fps (5 sec.- 2 min. length)
- 0.15 second Trigger Speed
- 0.35 Second Picture Recovery Time
- Illuma-Smart Technology Automatically adjusts IR Flash for Perfect Night Photos
- All-Steel Tree Mounting Bracket
- SD Card Management
- Long battery life from 8 AA batteries (not included)
- Up to 8 multi Shot images
- Up to 8 Rapid Fire images
- Smart IR video
- Selectable Start / Stop Image Timer
- Programmable picture delay (1 sec. – 60 min.)
- Picture info bar displays: time, date, temperature, moon phase, barometric pressure, camera ID
- Multilingual Programming Menu
- 12 volt external power jack
- Support up to 512GB SDXC memory card (not included)
- ¼" -20 tripod socket
- Compact case size 5" x 3.75" x 2.5"
- Timelapse Plus camera mode with IR triggered images
- Compatible with Browning Buck Watch Timelapse viewer software



Model# BTC-PATRIOT-FHD



BTC-SC1 : Includes ASPECT CAM, rechargeable battery and the SC-GMT Gun Barrel mount.

BTC-SC1B : Includes ASPECT CAM, rechargeable battery and the SC-BMT Bow mounting accessory.



The Browning ASPECT CAM is the perfect way to capture your next hunting adventure. Imagine capturing that perfect shot video in 4K UHD, to share with all of your friends. The ASPECT CAM connects to your smart phone using the ASPECT CAM app. Wirelessly connect the camera to your smart phone and record, replay and store videos right from your phone. You can also send the videos to family and friends right from the field.

AVAILABLE ACCESSORIES:

- **BTC-SC-GMT:** Universal Gun Barrel Mount
- **BTC-SC-SMK:** Scope Mounting Kit for 30mm and 1" Scopes
- **BTC-SC-BMT:** Universal Bow Mounting Accessory
- **BTC-SC-RMT:** Mounting System for Picatinny and Weaver Rails
- **BTC-SC-RCB:** ASPECT CAM Rechargeable Battery
- Mounts on most bows, rifles and shotguns
- Image stabilization aids in producing great videos
- Operates in 4K UHD or 1080p Full HD modes.
- Operates up to 120fps, for great slow motion playback
- Up to 8X zoom
- Easy to use button to start recordings in the field
- Rechargeable battery records for up to 4 hours
- Charging cable included
- Choose between Silent mode, Blackout mode and Vibrate modes
- Micro SD card slot for storage media (Micro SD not included)
- USB Charging port
- HDMI port connects to your TV for playback
- Store / Playback / Share your videos from the Browning ASPECT CAM App.
- Compatible with Apple and Android devices

ECONOMY CAMERA MOUNT



Model# BTC-ECM

Now there is an affordable way to quickly and easily install your Browning Trail Cameras in the field. The Economy Camera Mount easily screws into any tree giving you a perfect mounting platform. Each package contains 3 All-Steel, powder coated screw mounts.



CAMERA T-POST MOUNT

The all new T-Post Camera Mount is the ideal way to mount your trail cameras along the edge of fenced fields. The T-Post camera mount will mount to either side of nearly every T-Post on your farm or hunting property. The adjustable gimbal mount is ideal for aiming your trail camera at the perfect angle in the field. T-Post Mounts are constructed of powder coated steel for maximum life in the field.

Model# BTC-CTM



CAMERA FIELD MOUNT

The new Camera Field Mount is the perfect solution for mounting your trail camera in fields or areas where there are no trees. The rugged powder coated All-Steel field mount easily stakes into any terrain. The field mount can easily mount up to 2 cameras in the field, and features easy to use gimbal mounts to mount your cameras at the perfect angle.

Model# BTC-CFM

CAMERA TREE MOUNT



Model# BTC-TM

The Camera Tree Mount is the perfect accessory to aid in the placement of your trail cameras. You can now mount your trail cameras to that crooked tree and position the camera perfectly using the built in gimbal mount. The all steel construction ensures there are no plastic pieces to break in the field. The tree mount attaches via a 1/4" -20 threaded insert located in the bottom of most Browning Trail Cameras.



SD CARDS

For maximum trail camera performance, we recommend using Browning brand SD cards in your trail cameras. All of our SD cards are SDHC class 10, ensuring the fastest write speeds for high resolution photos and HD video clips. Our cards are available in 32GB and 64GB capacities.

32GB Model # BTC-32GSD
64GB Model # BTC-64GSD

CAMERA SECURITY BOXES

Our camera security boxes have been designed to ensure your trail camera stays where you put it. The all steel construction ensures maximum protection in the field. The added feature of the camouflage exterior makes your camera nearly impossible to detect in the woods. We offer 4 sizes of security boxes to fit specific cameras in our lineup. The security box can be locked using a standard padlock or a Master Lock Python cable (not included). Now available for Defender Wireless.

(Not compatible with Defender 850 or Defender 940 cameras.)

Model# BTC-SB

Spec Ops, Recon Force, Command Ops HD And PATRIOT Series Cameras

Model# BTC-SB-SM

All Strike Force, Dark Ops and Command Ops Pro camera models

Model# BTC-SB-DW

Fits cellular models BTC-4G-RLDC, BTC-DWC-ATT, BTC-DWC-VZW

Model# BTC-SB-PS

Fits cellular models BTC-DWPS-ATT, BTC-DWPS-VZW



BATTERIES



Model# BTC-8AA

Our trail camera batteries have been designed to meet the rigorous demands of today's trail cameras. We know that trail cameras are expected to perform across a wide spectrum of temperature extremes and other environmental stresses. Browning batteries are up to the challenge. Our Alkaline batteries are packed 8 AA per pack and are mercury and cadmium free.

SOLAR CAMERA POWER PACK



Model# BTC-SBP12

The New Solar Camera Power Pack is compatible with all of our trail camera models, and provides a constant power source for your camera in the field. The Power Pack includes 6 AA NiMH rechargeable batteries that are constantly being recharged by the highly efficient solar cell to keep your cameras running strong in the field. The solar pack mounts easily to any tree, or can be used with our line of camera mounts. The solar panel can be easily adjusted to the perfect angle to maximize solar power output.

POWER PACK



Model# BTC-XB

Our Trail Camera Power Pack will extend the battery life of your Browning Trail Camera in the field. This micro sized battery pack holds 8 AA batteries in the same easy to use battery tray used in the trail cameras. Other features include a built in battery tester and a twist lock plug to lock the power adapter to your Browning Trail Camera. Not compatible with Defender 850 or Defender 950 cameras. (batteries not included)



BROWNING

TRAIL CAMERAS

Manufactured and Distributed by Prometheus Group, LLC Birmingham, Alabama

Tel: +1 888 618 4496 Email: info@browningtrailcams.com

Fax: +1 888 628 9877 Web: www.browningtrailcameras.com

Browning Trademarks Licensed from Browning

BROWNING
OFFICIAL LICENSED PRODUCT