

CEL-FI™ G04 Smart Signal Repeater



 Performance Leadership

 Ease of Install

 Leaders in Value

 Fast Set Up

 Carrier Grade Approved

The Choice For Large Indoor Coverage Solutions

Designed to solve cellular coverage issues for indoor environments, the Cel-Fi G04 (G41) Smart Signal Repeater is the most powerful carrier grade solution available. Providing up to 100 dB gain, G04 offers class-leading voice and data performance. In addition to providing cellular coverage up to 3,000 m² when configured with the donor and server antennas, the system can be expanded with outdoor or additional server antennas for an increased coverage footprint.

Cel-Fi G04 is network safe and the easiest solution to install.

Industry-Leading Signal Gain

Leveraging Nextivity's award winning IntelliBoost® chipset, which is engineered to deliver unmatched cellular performance, G04 provides up to 100 dB signal gain.

Carrier Switching

G04 operates on more frequency bands and can be easily switched between Telstra, Optus and Vodafone-TPG (one carrier at a time) using the Wave App.



Maximum Gain: Industry-Leading Signal Gain up to 100 dB for Voice and Data



Best Performance: Smart Signal Repeater with IntelliBoost® Chipset Smart Technology



Cellular Coverage: 20dB of output power providing up to 3,000 m² per Unit for Buildings, Residential, Remote, and IoT



Ease of Set Up: 6 Steps for Installers and Maximised by AntennaBoost for Optimum System Performance



Cel-Fi WAVE: Mobile Device Application for System Set Up



Remote Monitoring: RJ45 Ethernet network interface for easy connectivity to Cel-Fi WAVE Portal for monitoring and alerts.



Network Safe: Carrier Approved with No Noise Guarantee



Flexibility at Your Fingertips

Antenna Positioning

To optimise your antenna using real-time data and achieve best possible performance, Nextivity's proprietary 8-position dial base in WAVE's Antenna Position Test allows you to compare signal strength when rotating the antenna in 45-degree increments.

Create the Ideal Solution to Optimise Performance and Streamline Installation

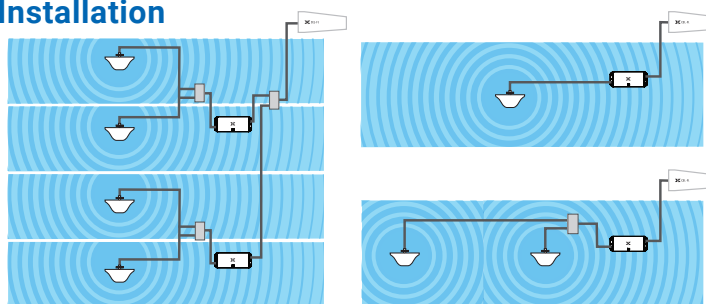
Cel-Fi GO bundles are perfect for:

- Government buildings
- Hospitals
- Parking garages
- Shopping centres and retail stores
- Manufacturing operations
- Multi-level commercial properties
- Warehouses
- Large homes

Cel-Fi GO4 represents the latest in 4G cellular repeater technology. Building on the success of the GO2 model, GO4 has a higher output power (+20 dBm), providing the largest coverage area of all GO models.

Cel-Fi GO4 is ideal for inbuilding cellular coverage applications for Telstra, Optus or Vodafone. The higher output power means more service antennas can be run from the one repeater. Combined with either Blackhawk Ceiling Dome Antenna(s) or Blackhawk Wall Mount Panel Antenna(s), the Cel-Fi GO G41 and the Blackhawk High Gain Omni Directional Antenna is the perfect in-building, remote, and IoT solution. Additional server antennas are available for buildings with multiple floors or dense interior walls. For areas that suffer from extremely poor outdoor signal, the high gain Blackhawk LPDA Antenna covers all cellular bands between the 700 and 4000 MHz range with a high peak gain projecting maximum energy in the direction of the cell tower, while maintaining a wide enough beam to capture signal reflections off nearby buildings, hills, and signal scattered by trees.

Cel-Fi GO4 Installation



Optional Antennas for Advanced Installations



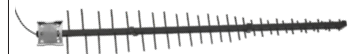
Blackhawk Wall Mount Panel Antenna
698-4000 MHz 5/7dB



Blackhawk High Gain Omni Antenna
698-2700 MHz 6dBi



Blackhawk Ceiling Dome Antenna
698-4000 MHz 2/5dBi



Blackhawk LPDA Antenna
698-4000 MHz 12/14dBi

6-STEP SET

Step 1:

Install Server Antennas with Cable

Step 2:

Install Donor Antennas with Cable

Step 3:

Mount Cel-Fi GO

Step 4:

Connect Donor & Server Antennas with Splitter to the Cel-Fi GO

Step 5:

Connect the AC Power Source

Step 6:

Activate & Optimize Set Up with Cel-Fi WAVE

